

September 2014

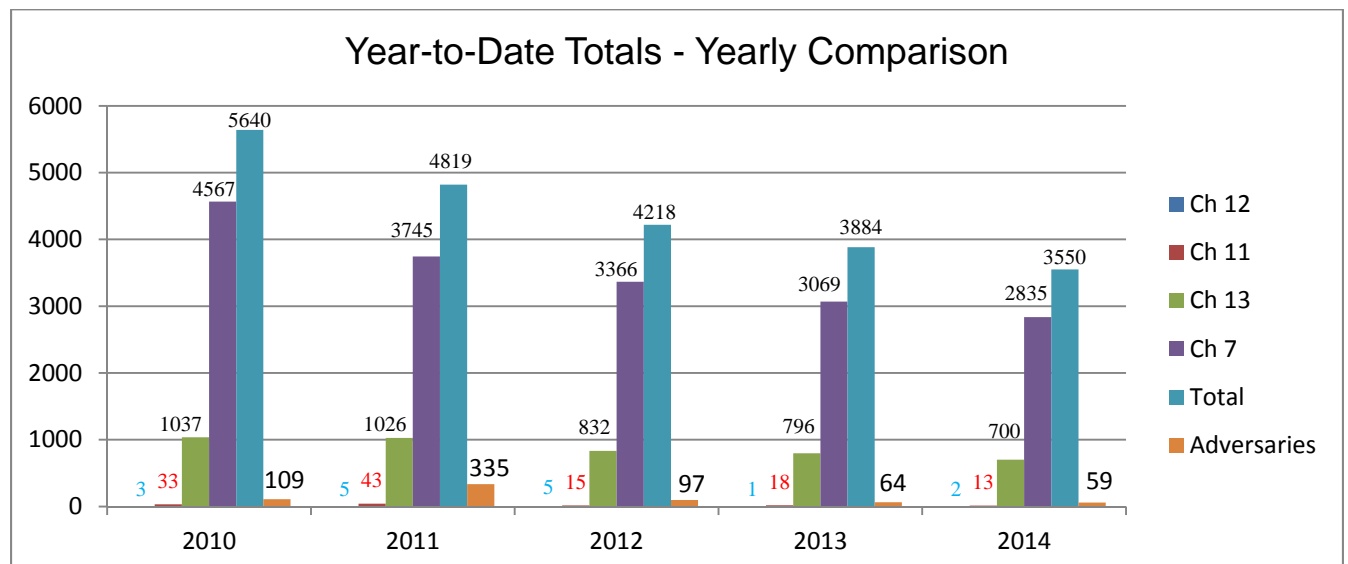
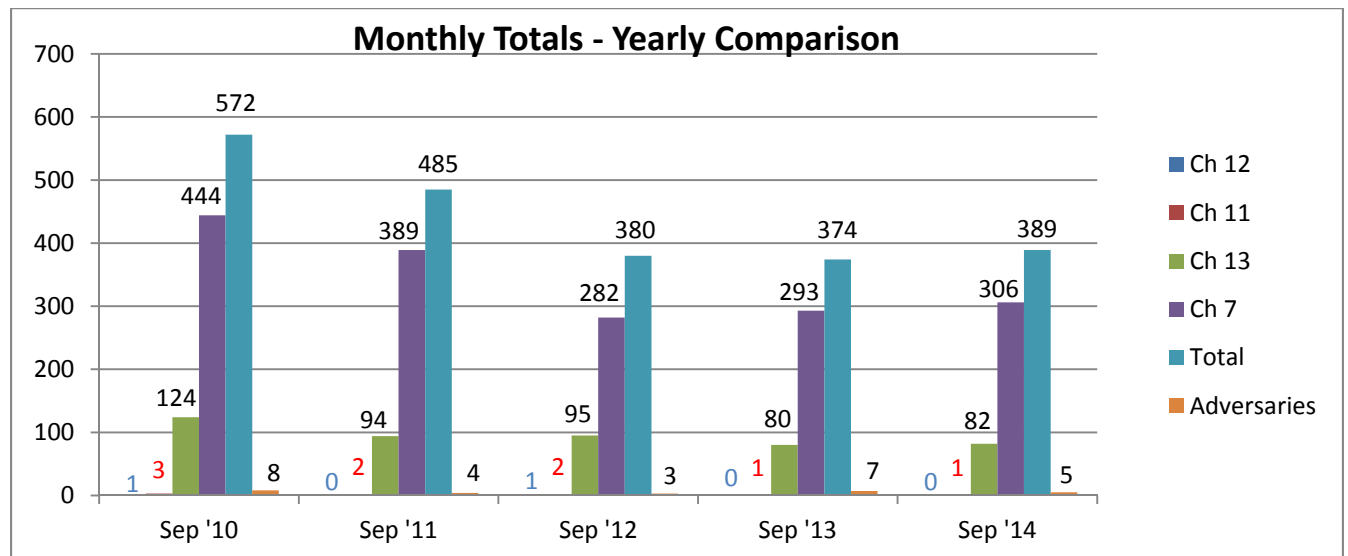
United States Bankruptcy Court
Eastern District of Washington

Beverly A. Benka
Clerk of Court

United States Bankruptcy Court
Eastern District of Washington
CM/ECF 2014

Bankruptcy Cases Filed													
	Jan	Feb	Mar	Apr	May	Jun	Jul	Aug	Sep	Oct	Nov	Dec	Total
Ch 7	279	284	410	369	330	307	286	264	306				2835
Ch 11	1	2	3	2	0	2	1	1	1				13
Ch 12	0	0	0	1	0	0	0	1	0				2
Ch 13	85	65	88	80	82	58	88	72	82				700
Total	365	351	501	452	412	367	375	338	389				3550

Adversary Proceedings Filed													
	Jan	Feb	Mar	Apr	May	Jun	Jul	Aug	Sep	Oct	Nov	Dec	Total
Total	9	11	5	12	5	5	4	3	5				59



United States Bankruptcy Court
 Eastern District of Washington
 CM/ECF 2014

Bankruptcy Cases Filed - by County													
	Jan	Feb	Mar	Apr	May	Jun	Jul	Aug	Sep	Oct	Nov	Dec	Total
Adams													
Ch 7	6	1	4	3	4	3	3	3	5				32
Ch 11	0	0	0	0	0	0	0	0	0				0
Ch 12	0	0	0	0	0	0	0	0	0				0
Ch 13	1	0	0	0	1	0	1	0	1				4
Total	7	1	4	3	5	3	4	3	6	0	0	0	36
Asotin													
Ch 7	2	7	8	10	9	3	5	2	4				50
Ch 11	0	0	0	0	0	0	0	0	0				0
Ch 12	0	0	0	0	0	0	0	0	0				0
Ch 13	0	0	0	0	1	0	0	0	0				1
Total	2	7	8	10	10	3	5	2	4	0	0	0	51
Benton													
Ch 7	22	24	53	36	35	31	41	33	35				310
Ch 11	0	0	0	0	0	0	0	0	0				0
Ch 12	0	0	0	0	0	0	0	0	0				0
Ch 13	6	7	5	6	5	7	9	4	9				58
Total	28	31	58	42	40	38	50	37	44	0	0	0	368
Chelan													
Ch 7	17	8	19	19	14	16	7	11	15				126
Ch 11	0	0	0	0	0	0	0	0	0				0
Ch 12	0	0	0	1	0	0	0	0	0				1
Ch 13	6	0	1	0	2	0	2	1	2				14
Total	23	8	20	20	16	16	9	12	17	0	0	0	141
Columbia													
Ch 7	2	0	2	0	1	0	1	1	1				8
Ch 11	0	0	0	0	0	0	0	0	0				0
Ch 12	0	0	0	0	0	0	0	0	0				0
Ch 13	0	0	0	0	0	0	0	0	1				1
Total	2	0	2	0	1	0	1	1	2	0	0	0	9
Douglas													
Ch 7	5	8	8	14	5	8	6	7	3				64
Ch 11	0	0	0	0	0	0	0	0	0				0
Ch 12	0	0	0	0	0	0	0	0	0				0
Ch 13	0	1	1	0	0	1	0	1	0				4
Total	5	9	9	14	5	9	6	8	3	0	0	0	68
Ferry													
Ch 7	0	0	0	0	0	0	0	2	0				2
Ch 11	0	0	0	0	0	0	0	0	0				0
Ch 12	0	0	0	0	0	0	0	0	0				0
Ch 13	0	0	0	0	0	0	0	0	0				0
Total	0	0	0	0	0	0	0	2	0	0	0	0	2

United States Bankruptcy Court
 Eastern District of Washington
 CM/ECF 2014

Bankruptcy Cases Filed - by County													
	Jan	Feb	Mar	Apr	May	Jun	Jul	Aug	Sep	Oct	Nov	Dec	Total
Franklin													
Ch 7	11	12	18	22	13	14	10	16	18				134
Ch 11	0	0	0	0	0	1	0	1	0				2
Ch 12	0	0	0	0	0	0	0	1	0				1
Ch 13	6	3	2	3	3	1	3	7	1				29
Total	17	15	20	25	16	16	13	25	19	0	0	0	166
Garfield													
Ch 7	0	0	1	0	0	1	0	1	1				4
Ch 11	0	0	0	0	0	0	0	0	0				0
Ch 12	0	0	0	0	0	0	0	0	0				0
Ch 13	0	0	0	0	0	1	0	0	0				1
Total	0	0	1	0	0	2	0	1	1	0	0	0	5
Grant													
Ch 7	26	16	24	27	20	16	18	18	14				179
Ch 11	0	0	0	1	0	0	0	0	0				1
Ch 12	0	0	0	0	0	0	0	0	0				0
Ch 13	1	3	0	2	4	3	2	1	2				18
Total	27	19	24	30	24	19	20	19	16	0	0	0	198
Kittitas													
Ch 7	4	5	12	6	11	4	8	9	5				64
Ch 11	0	0	1	0	0	0	0	0	0				1
Ch 12	0	0	0	0	0	0	0	0	0				0
Ch 13	1	0	1	3	2	0	2	2	3				14
Total	5	5	14	9	13	4	10	11	8	0	0	0	79
Klickitat													
Ch 7	0	4	3	5	5	4	5	0	3				29
Ch 11	0	0	0	0	0	0	0	0	0				0
Ch 12	0	0	0	0	0	0	0	0	0				0
Ch 13	2	1	2	0	1	0	0	0	0				6
Total	2	5	5	5	6	4	5	0	3	0	0	0	35
Lincoln													
Ch 7	0	0	0	1	2	1	3	0	1				8
Ch 11	0	0	0	0	0	0	0	0	0				0
Ch 12	0	0	0	0	0	0	0	0	0				0
Ch 13	1	1	0	0	0	0	0	1	0				3
Total	1	1	0	1	2	1	3	1	1	0	0	0	11
Okanogan													
Ch 7	2	0	10	10	3	8	6	3	1				43
Ch 11	0	1	0	0	0	0	0	0	0				1
Ch 12	0	0	0	0	0	0	0	0	0				0
Ch 13	1	0	1	0	3	1	0	2	2				10
Total	3	1	11	10	6	9	6	5	3	0	0	0	54

United States Bankruptcy Court
 Eastern District of Washington
 CM/ECF 2014

Bankruptcy Cases Filed - by County													
	Jan	Feb	Mar	Apr	May	Jun	Jul	Aug	Sep	Oct	Nov	Dec	Total
Outside US													
Ch 7	0	0	0	0	0	0	0	0	0				0
Ch 11	0	0	0	0	0	0	0	0	0				0
Ch 12	0	0	0	0	0	0	0	0	0				0
Ch 13	0	0	0	0	0	0	0	0	0				0
Total	0	0	0	0	0	0	0	0	0	0	0	0	0
Grand Totals													
Ch 7	279	284	410	369	330	307	286	264	306	0	0	0	2835
Ch 11	1	2	3	2	0	2	1	1	1	0	0	0	13
Ch 12	0	0	0	1	0	0	0	1	0	0	0	0	2
Ch 13	85	65	88	80	82	58	88	72	82	0	0	0	700
Total	365	351	501	452	412	367	375	338	389	0	0	0	3550

United States Bankruptcy Court
 Eastern District of Washington
 CM/ECF 2014

Bankruptcy Cases Filed - by Region													
	Jan	Feb	Mar	Apr	May	Jun	Jul	Aug	Sept	Oct	Nov	Dec	Total
YAKIMA													
Ch 7	53	65	90	73	73	66	73	46	62				601
Ch 11	1	1	2	0	0	0	1	0	0				5
Ch 12	0	0	0	0	0	0	0	0	0				0
Ch 13	43	24	56	40	42	22	37	28	43				335
Total	97	90	148	113	115	88	111	74	105	0	0	0	941
WENATCHEE													
Ch 7	24	16	37	43	22	32	19	21	19				233
Ch 11	0	1	0	0	0	0	0	0	0				1
Ch 12	0	0	0	1	0	0	0	0	0				1
Ch 13	7	1	3	0	5	2	2	4	4				28
Total	31	18	40	44	27	34	21	25	23	0	0	0	263
TRI-CITIES													
Ch 7	47	50	81	68	59	55	62	63	69				554
Ch 11	0	0	0	0	0	2	0	1	0				3
Ch 12	0	0	0	0	0	0	0	1	0				1
Ch 13	13	13	10	10	10	12	13	11	13				105
Total	60	63	91	78	69	69	75	76	82	0	0	0	663
MOSES LAKE													
Ch 7	32	17	28	30	24	19	21	21	19				211
Ch 11	0	0	0	1	0	0	0	0	0				1
Ch 12	0	0	0	0	0	0	0	0	0				0
Ch 13	2	3	0	2	5	3	3	1	3				22
Total	34	20	28	33	29	22	24	22	22	0	0	0	234
SPOKANE													
Ch 7	123	135	174	155	152	135	111	113	137				1235
Ch 11	0	0	1	1	0	0	0	0	1				3
Ch 12	0	0	0	0	0	0	0	0	0				0
Ch 13	20	24	19	28	20	19	33	28	19				210
Total	143	159	194	184	172	154	144	141	157	0	0	0	1448

**United States Bankruptcy Court
Eastern District of Washington
1993-2014 (YTD 9/30)
Bankruptcy Cases**

