

Statistics

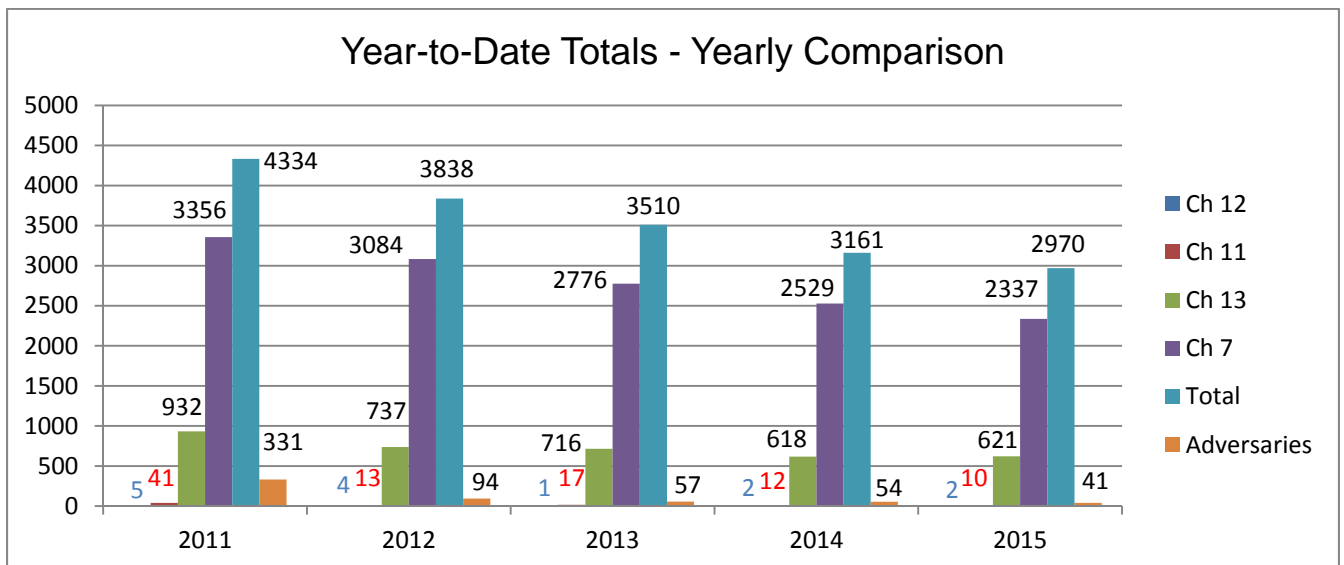
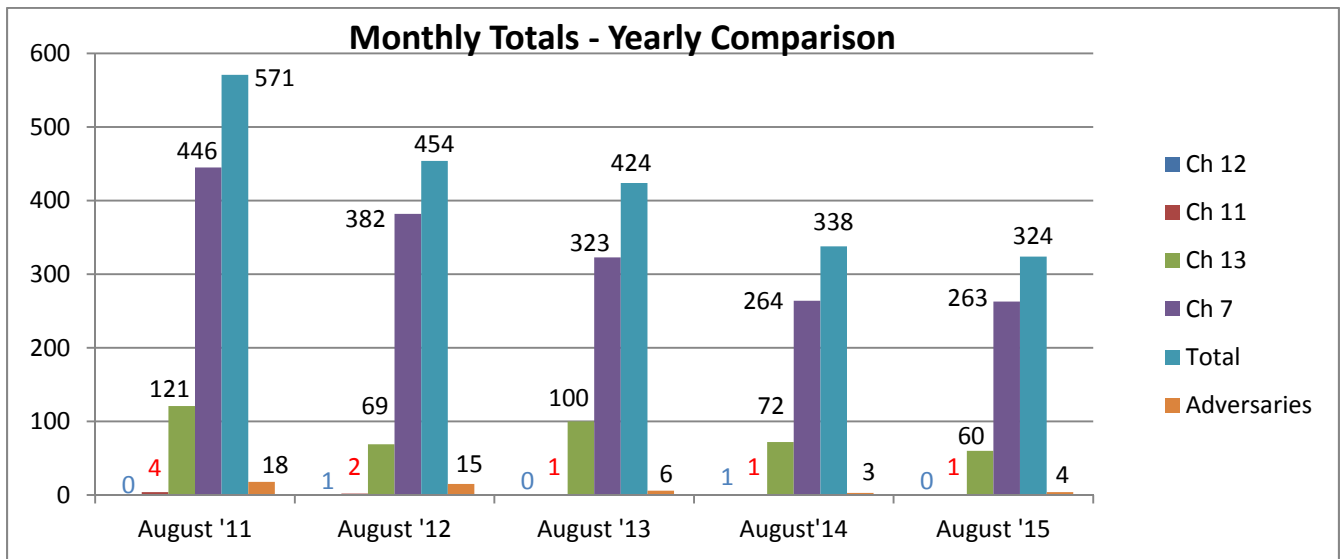
August 2015

United States Bankruptcy Court
Eastern District of Washington

United States Bankruptcy Court
 Eastern District of Washington
 CM/ECF 2015

Bankruptcy Cases Filed													
	Jan	Feb	Mar	Apr	May	Jun	Jul	Aug	Sep	Oct	Nov	Dec	Total
Ch 7	257	295	384	373	238	260	267	263					2337
Ch 11	1	1	2	1	1	1	2	1					10
Ch 12	0	0	0	0	0	2	0	0					2
Ch 13	78	74	111	70	76	73	79	60					621
Total	336	370	497	444	315	336	348	324					2970

Adversary Proceedings Filed													
	Jan	Feb	Mar	Apr	May	Jun	Jul	Aug	Sep	Oct	Nov	Dec	Total
Total	3	3	9	4	5	5	8	4					41



United States Bankruptcy Court
 Eastern District of Washington
 CM/ECF 2015

Bankruptcy Cases Filed - by County													
	Jan	Feb	Mar	Apr	May	Jun	Jul	Aug	Sep	Oct	Nov	Dec	Total
Adams													
Ch 7	4	3	3	6	3	2	2	2					25
Ch 11	0	0	0	0	0	0	0	0					0
Ch 12	0	0	0	0	0	0	0	0					0
Ch 13	0	0	1	1	0	0	0	1					3
Total	4	3	4	7	3	2	2	3	0	0	0	0	28
Asotin													
Ch 7	8	7	6	6	2	4	3	6					42
Ch 11	0	1	0	0	0	0	0	0					1
Ch 12	0	0	0	0	0	0	0	0					0
Ch 13	0	1	0	0	0	0	1	0					2
Total	8	9	6	6	2	4	4	6	0	0	0	0	45
Benton													
Ch 7	22	35	31	44	26	39	30	25					252
Ch 11	1	0	0	0	1	1	0	0					3
Ch 12	0	0	0	0	0	0	0	0					0
Ch 13	5	3	9	4	5	6	7	3					42
Total	28	38	40	48	32	46	37	28	0	0	0	0	297
Chelan													
Ch 7	10	12	14	14	11	5	9	13					88
Ch 11	0	0	0	0	0	0	0	0					0
Ch 12	0	0	0	0	0	0	0	0					0
Ch 13	1	3	3	2	1	2	1	1					14
Total	11	15	17	16	12	7	10	14	0	0	0	0	102
Columbia													
Ch 7	0	0	0	1	0	1	0	0					2
Ch 11	0	0	0	0	0	0	0	0					0
Ch 12	0	0	0	0	0	0	0	0					0
Ch 13	0	0	0	0	0	0	0	0					0
Total	0	0	0	1	0	1	0	0	0	0	0	0	2
Douglas													
Ch 7	6	9	10	7	5	4	5	7					53
Ch 11	0	0	0	1	0	0	0	0					1
Ch 12	0	0	0	0	0	0	0	0					0
Ch 13	0	0	1	0	2	0	2	2					7
Total	6	9	11	8	7	4	7	9	0	0	0	0	61
Ferry													
Ch 7	2	0	0	4	2	1	0	0					9
Ch 11	0	0	0	0	0	0	0	0					0
Ch 12	0	0	0	0	0	0	0	0					0
Ch 13	0	0	0	0	0	0	0	1					1
Total	2	0	0	4	2	1	0	1	0	0	0	0	10

United States Bankruptcy Court
 Eastern District of Washington
 CM/ECF 2015

Bankruptcy Cases Filed - by County													
	Jan	Feb	Mar	Apr	May	Jun	Jul	Aug	Sep	Oct	Nov	Dec	Total
Franklin													
Ch 7	17	12	26	27	16	17	11	11					137
Ch 11	0	0	0	0	0	0	0	0					0
Ch 12	0	0	0	0	0	0	0	0					0
Ch 13	3	4	3	5	5	1	3	0					24
Total	20	16	29	32	21	18	14	11	0	0	0	0	161
Garfield													
Ch 7	0	0	0	1	1	1	0	0					3
Ch 11	0	0	0	0	0	0	0	0					0
Ch 12	0	0	0	0	0	0	0	0					0
Ch 13	0	0	0	0	0	0	0	0					0
Total	0	0	0	1	1	1	0	0	0	0	0	0	3
Grant													
Ch 7	20	14	18	18	18	20	20	16					144
Ch 11	0	0	0	0	0	0	0	0					0
Ch 12	0	0	0	0	0	0	0	0					0
Ch 13	4	3	4	1	1	1	3	3					20
Total	24	17	22	19	19	21	23	19	0	0	0	0	164
Kittitas													
Ch 7	6	3	4	2	3	2	4	3					27
Ch 11	0	0	0	0	0	0	0	0					0
Ch 12	0	0	0	0	0	0	0	0					0
Ch 13	0	2	2	2	1	1	1	0					9
Total	6	5	6	4	4	3	5	3	0	0	0	0	36
Klickitat													
Ch 7	4	3	7	4	2	3	4	2					29
Ch 11	0	0	0	0	0	0	0	0					0
Ch 12	0	0	0	0	0	0	0	0					0
Ch 13	2	1	0	1	0	0	0	0					4
Total	6	4	7	5	2	3	4	2	0	0	0	0	33
Lincoln													
Ch 7	2	1	1	1	2	2	3	2					14
Ch 11	0	0	0	0	0	0	0	0					0
Ch 12	0	0	0	0	0	0	0	0					0
Ch 13	0	0	1	1	0	0	2	0					4
Total	2	1	2	2	2	2	5	2	0	0	0	0	18
Okanogan													
Ch 7	4	2	7	5	1	2	4	3					28
Ch 11	0	0	0	0	0	0	0	0					0
Ch 12	0	0	0	0	0	0	0	0					0
Ch 13	2	0	1	0	0	0	0	0					3
Total	6	2	8	5	1	2	4	3	0	0	0	0	31

United States Bankruptcy Court
 Eastern District of Washington
 CM/ECF 2015

Bankruptcy Cases Filed - by County

	Jan	Feb	Mar	Apr	May	Jun	Jul	Aug	Sep	Oct	Nov	Dec	Total
Pend Orielle													
Ch 7	3	1	0	1	1	1	1	1					9
Ch 11	0	0	0	0	0	0	0	0					0
Ch 12	0	0	0	0	0	0	0	0					0
Ch 13	0	1	2	0	1	0	1	0					5
Total	3	2	2	1	2	1	2	1	0	0	0	0	14

Spokane													
Ch 7	103	123	136	150	94	87	103	105					901
Ch 11	0	0	1	0	0	0	1	1					3
Ch 12	0	0	0	0	0	2	0	0					2
Ch 13	25	23	21	20	27	18	18	17					169
Total	128	146	158	170	121	107	122	123	0	0	0	0	1075

Stevens													
Ch 7	6	6	13	13	7	4	5	9					63
Ch 11	0	0	0	0	0	0	0	0					0
Ch 12	0	0	0	0	0	0	0	0					0
Ch 13	1	0	2	1	0	0	1	4					9
Total	7	6	15	14	7	4	6	13	0	0	0	0	72

Walla Walla													
Ch 7	7	6	14	6	5	17	15	4					74
Ch 11	0	0	0	0	0	0	0	0					0
Ch 12	0	0	0	0	0	0	0	0					0
Ch 13	4	2	1	1	2	1	3	3					17
Total	11	8	15	7	7	18	18	7	0	0	0	0	91

Whitman													
Ch 7	1	4	2	4	4	5	1	2					23
Ch 11	0	0	0	0	0	0	0	0					0
Ch 12	0	0	0	0	0	0	0	0					0
Ch 13	0	0	0	0	0	0	0	0					0
Total	1	4	2	4	4	5	1	2	0	0	0	0	23

Yakima													
Ch 7	32	54	92	59	35	43	47	51					413
Ch 11	0	0	1	0	0	0	1	0					2
Ch 12	0	0	0	0	0	0	0	0					0
Ch 13	31	31	60	31	31	43	36	25					288
Total	63	85	153	90	66	86	84	76	0	0	0	0	703

Outside District													
Ch 7	0	0	0	0	0	0	0	1					1
Ch 11	0	0	0	0	0	0	0	0					0
Ch 12	0	0	0	0	0	0	0	0					0
Ch 13	0	0	0	0	0	0	0	0					0
Total	0	0	0	0	0	0	0	1	0	0	0	0	1

United States Bankruptcy Court
 Eastern District of Washington
 CM/ECF 2015

Bankruptcy Cases Filed - by County													
	Jan	Feb	Mar	Apr	May	Jun	Jul	Aug	Sep	Oct	Nov	Dec	Total
Outside US													
Ch 7	0	0	0	0	0	0	0	0					0
Ch 11	0	0	0	0	0	0	0	0					0
Ch 12	0	0	0	0	0	0	0	0					0
Ch 13	0	0	0	0	0	0	0	0					0
Total	0	0	0	0	0	0	0	0	0	0	0	0	0
Grand Totals													
Ch 7	257	295	384	373	238	260	267	263	0	0	0	0	2337
Ch 11	1	1	2	1	1	1	2	1	0	0	0	0	10
Ch 12	0	0	0	0	0	2	0	0	0	0	0	0	2
Ch 13	78	74	111	70	76	73	79	60	0	0	0	0	621
Total	336	370	497	444	315	336	348	324	0	0	0	0	2970

United States Bankruptcy Court
 Eastern District of Washington
 CM/ECF 2015

Bankruptcy Cases Filed - by Region													
	Jan	Feb	Mar	Apr	May	Jun	Jul	Aug	Sept	Oct	Nov	Dec	Total
YAKIMA													
Ch 7	42	60	103	65	40	48	55	56					469
Ch 11	0	0	1	0	0	0	1	0					2
Ch 12	0	0	0	0	0	0	0	0					0
Ch 13	33	34	62	34	32	44	37	25					301
Total	75	94	166	99	72	92	93	81	0	0	0	0	772
WENATCHEE													
Ch 7	20	23	31	26	17	11	18	23					169
Ch 11	0	0	0	1	0	0	0	0					1
Ch 12	0	0	0	0	0	0	0	0					0
Ch 13	3	3	5	2	3	2	3	3					24
Total	23	26	36	29	20	13	21	26	0	0	0	0	194
TRI-CITIES													
Ch 7	46	53	71	78	47	74	56	40					465
Ch 11	1	0	0	0	1	1	0	0					3
Ch 12	0	0	0	0	0	0	0	0					0
Ch 13	12	9	13	10	12	8	13	6					83
Total	59	62	84	88	60	83	69	46	0	0	0	0	551
MOSES LAKE													
Ch 7	24	17	21	24	21	22	22	18					169
Ch 11	0	0	0	0	0	0	0	0					0
Ch 12	0	0	0	0	0	0	0	0					0
Ch 13	4	3	5	2	1	1	3	4					23
Total	28	20	26	26	22	23	25	22	0	0	0	0	192
SPOKANE													
Ch 7	125	142	158	180	113	105	116	125					1064
Ch 11	0	1	1	0	0	0	1	1					4
Ch 12	0	0	0	0	0	2	0	0					2
Ch 13	26	25	26	22	28	18	23	22					190
Total	151	168	185	202	141	125	140	148	0	0	0	0	1260

**United States Bankruptcy Court
Eastern District of Washington
1993-2015 (YTD 8/31)
Bankruptcy Cases**

