

Statistics

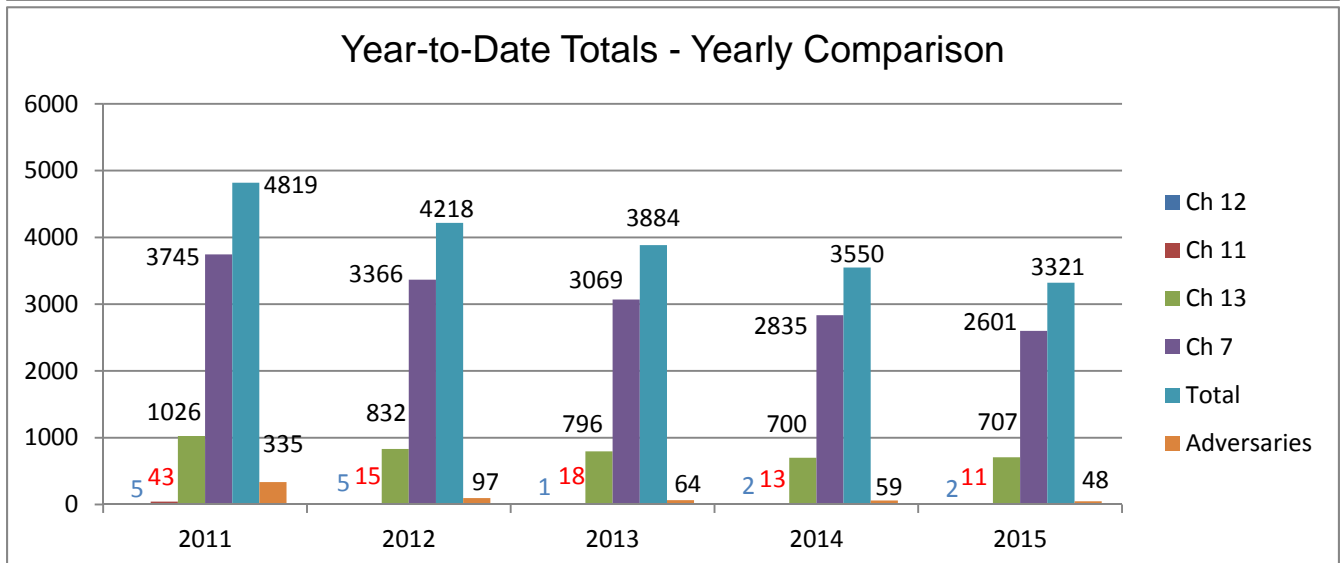
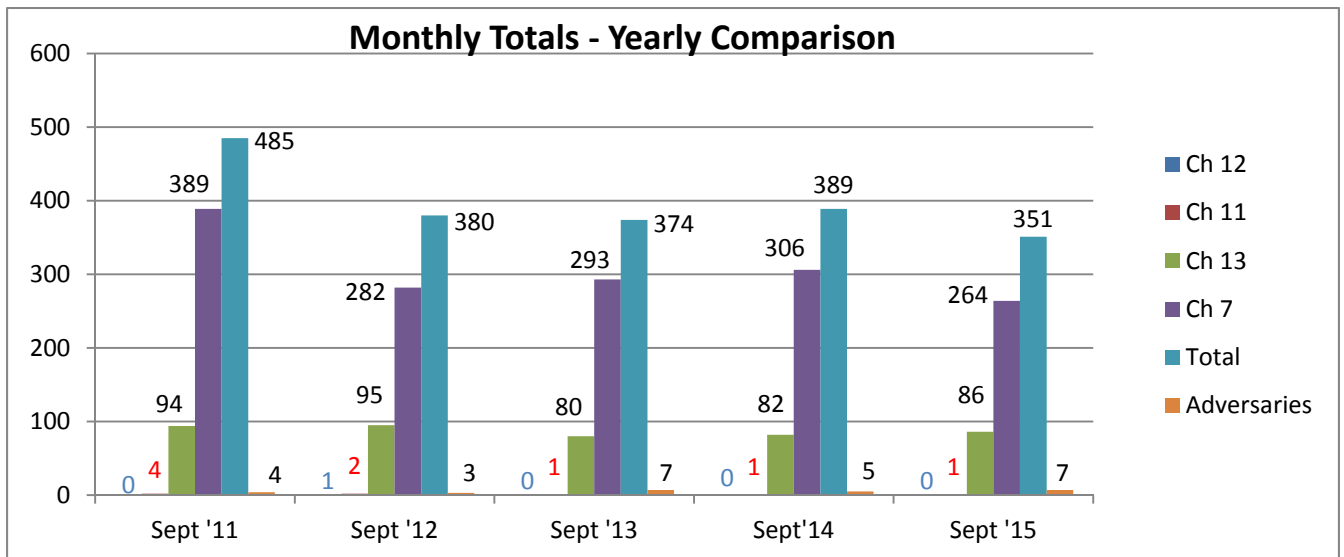
September 2015

United States Bankruptcy Court
Eastern District of Washington

United States Bankruptcy Court
Eastern District of Washington
CM/ECF 2015

Bankruptcy Cases Filed													
	Jan	Feb	Mar	Apr	May	Jun	Jul	Aug	Sep	Oct	Nov	Dec	Total
Ch 7	257	295	384	373	238	260	267	263	264				2601
Ch 11	1	1	2	1	1	1	2	1	1				11
Ch 12	0	0	0	0	0	2	0	0	0				2
Ch 13	78	74	111	70	76	73	79	60	86				707
Total	336	370	497	444	315	336	348	324	351				3321

Adversary Proceedings Filed													
	Jan	Feb	Mar	Apr	May	Jun	Jul	Aug	Sep	Oct	Nov	Dec	Total
Total	3	3	9	4	5	5	8	4	7				48



United States Bankruptcy Court
 Eastern District of Washington
 CM/ECF 2015

Bankruptcy Cases Filed - by County													
	Jan	Feb	Mar	Apr	May	Jun	Jul	Aug	Sep	Oct	Nov	Dec	Total
Adams													
Ch 7	4	3	3	6	3	2	2	2	5				30
Ch 11	0	0	0	0	0	0	0	0	0				0
Ch 12	0	0	0	0	0	0	0	0	0				0
Ch 13	0	0	1	1	0	0	0	1	0				3
Total	4	3	4	7	3	2	2	3	5	0	0	0	33
Asotin													
Ch 7	8	7	6	6	2	4	3	6	7				49
Ch 11	0	1	0	0	0	0	0	0	0				1
Ch 12	0	0	0	0	0	0	0	0	0				0
Ch 13	0	1	0	0	0	0	1	0	0				2
Total	8	9	6	6	2	4	4	6	7	0	0	0	52
Benton													
Ch 7	22	35	31	44	26	39	30	25	35				287
Ch 11	1	0	0	0	1	1	0	0	0				3
Ch 12	0	0	0	0	0	0	0	0	0				0
Ch 13	5	3	9	4	5	6	7	3	9				51
Total	28	38	40	48	32	46	37	28	44	0	0	0	341
Chelan													
Ch 7	10	12	14	14	11	5	9	13	13				101
Ch 11	0	0	0	0	0	0	0	0	0				0
Ch 12	0	0	0	0	0	0	0	0	0				0
Ch 13	1	3	3	2	1	2	1	1	0				14
Total	11	15	17	16	12	7	10	14	13	0	0	0	115
Columbia													
Ch 7	0	0	0	1	0	1	0	0	1				3
Ch 11	0	0	0	0	0	0	0	0	0				0
Ch 12	0	0	0	0	0	0	0	0	0				0
Ch 13	0	0	0	0	0	0	0	0	1				1
Total	0	0	0	1	0	1	0	0	2	0	0	0	4
Douglas													
Ch 7	6	9	10	7	5	4	5	7	5				58
Ch 11	0	0	0	1	0	0	0	0	0				1
Ch 12	0	0	0	0	0	0	0	0	0				0
Ch 13	0	0	1	0	2	0	2	2	2				9
Total	6	9	11	8	7	4	7	9	7	0	0	0	68
Ferry													
Ch 7	2	0	0	4	2	1	0	0	1				10
Ch 11	0	0	0	0	0	0	0	0	0				0
Ch 12	0	0	0	0	0	0	0	0	0				0
Ch 13	0	0	0	0	0	0	0	1	0				1
Total	2	0	0	4	2	1	0	1	1	0	0	0	11

United States Bankruptcy Court
 Eastern District of Washington
 CM/ECF 2015

Bankruptcy Cases Filed - by County													
	Jan	Feb	Mar	Apr	May	Jun	Jul	Aug	Sep	Oct	Nov	Dec	Total
Franklin													
Ch 7	17	12	26	27	16	17	11	11	17				154
Ch 11	0	0	0	0	0	0	0	0	0				0
Ch 12	0	0	0	0	0	0	0	0	0				0
Ch 13	3	4	3	5	5	1	3	0	2				26
Total	20	16	29	32	21	18	14	11	19	0	0	0	180
Garfield													
Ch 7	0	0	0	1	1	1	0	0	2				5
Ch 11	0	0	0	0	0	0	0	0	0				0
Ch 12	0	0	0	0	0	0	0	0	0				0
Ch 13	0	0	0	0	0	0	0	0	0				0
Total	0	0	0	1	1	1	0	0	2	0	0	0	5
Grant													
Ch 7	20	14	18	18	18	20	20	16	18				162
Ch 11	0	0	0	0	0	0	0	0	0				0
Ch 12	0	0	0	0	0	0	0	0	0				0
Ch 13	4	3	4	1	1	1	3	3	4				24
Total	24	17	22	19	19	21	23	19	22	0	0	0	186
Kittitas													
Ch 7	6	3	4	2	3	2	4	3	2				29
Ch 11	0	0	0	0	0	0	0	0	0				0
Ch 12	0	0	0	0	0	0	0	0	0				0
Ch 13	0	2	2	2	1	1	1	0	0				9
Total	6	5	6	4	4	3	5	3	2	0	0	0	38
Klickitat													
Ch 7	4	3	7	4	2	3	4	2	4				33
Ch 11	0	0	0	0	0	0	0	0	0				0
Ch 12	0	0	0	0	0	0	0	0	0				0
Ch 13	2	1	0	1	0	0	0	0	1				5
Total	6	4	7	5	2	3	4	2	5	0	0	0	38
Lincoln													
Ch 7	2	1	1	1	2	2	3	2	3				17
Ch 11	0	0	0	0	0	0	0	0	0				0
Ch 12	0	0	0	0	0	0	0	0	0				0
Ch 13	0	0	1	1	0	0	2	0	0				4
Total	2	1	2	2	2	2	5	2	3	0	0	0	21
Okanogan													
Ch 7	4	2	7	5	1	2	4	3	4				32
Ch 11	0	0	0	0	0	0	0	0	0				0
Ch 12	0	0	0	0	0	0	0	0	0				0
Ch 13	2	0	1	0	0	0	0	0	0				3
Total	6	2	8	5	1	2	4	3	4	0	0	0	35

United States Bankruptcy Court
 Eastern District of Washington
 CM/ECF 2015

Bankruptcy Cases Filed - by County

	Jan	Feb	Mar	Apr	May	Jun	Jul	Aug	Sep	Oct	Nov	Dec	Total
Pend Orielle													
Ch 7	3	1	0	1	1	1	1	1	1				10
Ch 11	0	0	0	0	0	0	0	0	0				0
Ch 12	0	0	0	0	0	0	0	0	0				0
Ch 13	0	1	2	0	1	0	1	0	0				5
Total	3	2	2	1	2	1	2	1	1	0	0	0	15

Spokane													
Ch 7	103	123	136	150	94	87	103	105	90				991
Ch 11	0	0	1	0	0	0	1	1	1				4
Ch 12	0	0	0	0	0	2	0	0	0				2
Ch 13	25	23	21	20	27	18	18	17	23				192
Total	128	146	158	170	121	107	122	123	114	0	0	0	1189

Stevens													
Ch 7	6	6	13	13	7	4	5	9	6				69
Ch 11	0	0	0	0	0	0	0	0	0				0
Ch 12	0	0	0	0	0	0	0	0	0				0
Ch 13	1	0	2	1	0	0	1	4	1				10
Total	7	6	15	14	7	4	6	13	7	0	0	0	79

Walla Walla													
Ch 7	7	6	14	6	5	17	15	4	3				77
Ch 11	0	0	0	0	0	0	0	0	0				0
Ch 12	0	0	0	0	0	0	0	0	0				0
Ch 13	4	2	1	1	2	1	3	3	2				19
Total	11	8	15	7	7	18	18	7	5	0	0	0	96

Whitman													
Ch 7	1	4	2	4	4	5	1	2	1				24
Ch 11	0	0	0	0	0	0	0	0	0				0
Ch 12	0	0	0	0	0	0	0	0	0				0
Ch 13	0	0	0	0	0	0	0	0	2				2
Total	1	4	2	4	4	5	1	2	3	0	0	0	26

Yakima													
Ch 7	32	54	92	59	35	43	47	51	46				459
Ch 11	0	0	1	0	0	0	1	0	0				2
Ch 12	0	0	0	0	0	0	0	0	0				0
Ch 13	31	31	60	31	31	43	36	25	39				327
Total	63	85	153	90	66	86	84	76	85	0	0	0	788

Outside District													
Ch 7	0	0	0	0	0	0	0	1	0				1
Ch 11	0	0	0	0	0	0	0	0	0				0
Ch 12	0	0	0	0	0	0	0	0	0				0
Ch 13	0	0	0	0	0	0	0	0	0				0
Total	0	0	0	0	0	0	0	1	0	0	0	0	1

United States Bankruptcy Court
 Eastern District of Washington
 CM/ECF 2015

Bankruptcy Cases Filed - by County													
	Jan	Feb	Mar	Apr	May	Jun	Jul	Aug	Sep	Oct	Nov	Dec	Total
Outside US													
Ch 7	0	0	0	0	0	0	0	0	0				0
Ch 11	0	0	0	0	0	0	0	0	0				0
Ch 12	0	0	0	0	0	0	0	0	0				0
Ch 13	0	0	0	0	0	0	0	0	0				0
Total	0	0	0	0	0	0	0	0	0	0	0	0	0
Grand Totals													
Ch 7	257	295	384	373	238	260	267	263	264	0	0	0	2601
Ch 11	1	1	2	1	1	1	2	1	1	0	0	0	11
Ch 12	0	0	0	0	0	2	0	0	0	0	0	0	2
Ch 13	78	74	111	70	76	73	79	60	86	0	0	0	707
Total	336	370	497	444	315	336	348	324	351	0	0	0	3321

United States Bankruptcy Court
 Eastern District of Washington
 CM/ECF 2015

Bankruptcy Cases Filed - by Region													
	Jan	Feb	Mar	Apr	May	Jun	Jul	Aug	Sept	Oct	Nov	Dec	Total
YAKIMA													
Ch 7	42	60	103	65	40	48	55	56	52				521
Ch 11	0	0	1	0	0	0	1	0	0				2
Ch 12	0	0	0	0	0	0	0	0	0				0
Ch 13	33	34	62	34	32	44	37	25	40				341
Total	75	94	166	99	72	92	93	81	92	0	0	0	864
WENATCHEE													
Ch 7	20	23	31	26	17	11	18	23	22				191
Ch 11	0	0	0	1	0	0	0	0	0				1
Ch 12	0	0	0	0	0	0	0	0	0				0
Ch 13	3	3	5	2	3	2	3	3	2				26
Total	23	26	36	29	20	13	21	26	24	0	0	0	218
TRI-CITIES													
Ch 7	46	53	71	78	47	74	56	40	56				521
Ch 11	1	0	0	0	1	1	0	0	0				3
Ch 12	0	0	0	0	0	0	0	0	0				0
Ch 13	12	9	13	10	12	8	13	6	14				97
Total	59	62	84	88	60	83	69	46	70	0	0	0	621
MOSES LAKE													
Ch 7	24	17	21	24	21	22	22	18	23				192
Ch 11	0	0	0	0	0	0	0	0	0				0
Ch 12	0	0	0	0	0	0	0	0	0				0
Ch 13	4	3	5	2	1	1	3	4	4				27
Total	28	20	26	26	22	23	25	22	27	0	0	0	219
SPOKANE													
Ch 7	125	142	158	180	113	105	116	125	111				1175
Ch 11	0	1	1	0	0	0	1	1	1				5
Ch 12	0	0	0	0	0	2	0	0	0				2
Ch 13	26	25	26	22	28	18	23	22	26				216
Total	151	168	185	202	141	125	140	148	138	0	0	0	1398

**United States Bankruptcy Court
Eastern District of Washington
1993-2015 (YTD 9/30)
Bankruptcy Cases**

